



**ENGINE**

Model	: ISUZU-AH-6HK1X
Type	: Water-cooled, 4 cycle, 6 cylinders, line type direct injection, turbocharger, intercooler, electronic diesel engine
Power	: 266HP / 1900 rpm SAE J1349 (Net) : 285HP / 1900 rpm SAE J1995 (Gross)
Max. Torque	: 1070 Nm / 1500 rpm (Net) : 1136 Nm / 1500 rpm (Gross)
Displacement	: 7790 cc
Bore and Stroke	: 115 mm x 125 mm
Emission Class	: FAZ III-A (Tier III) * (UNECE R96)

This new engine complies with the Emission Regulations U.S. EPA Tier III, and and EU Stage III-A

**UNDERCARRIAGE**

X Type Lower Frame Construction Pentagon Box Type Chassis

Shoe	: Triple grouser
No. Of Shoes	: 2 x 50
No. Of Lower Rollers	: 2 x 9
No. Of Upper Rollers	: 2 x 2
Track Tensioning	: Hydraulic Spring Tensioning

**CAB**

- Wide cab and easy entrance
- Use of six viscomount cabin mountings that dampen the vibrations
- Cooled storage room
- Colourful, Easy to read TFT indicant monitor
- Glass holder, book and object storage pockets
- Full automatic digitally air-conditioner
- Overclass standarts on the visibility
- Pool type floor mat
- Improved operator's comfort through versatile adjustable seat
- Ergonomically redesigned cabin through relocated switch board, and re-styled travel pedals and levers
- USB connected MP3 player
- Easy to open the front sliding glass
- Front and rear sun visor
- Large storage areas
- Height adjustable joystick
- Improved seat to back angle
- The height adjustable seat armrests
- Opera Control System

**TRAVEL AND BRAKERS**

Travel	: Fully hydrostatic
Travel Motors	: Axial piston type
Reduction	: 2 stage planetary gear
<b>Travel Speed</b>	
High Speed	: 4,9 km/h
Low Speed	: 2,9 km/h
Max. Drawbar Pull	: 30.540 kgf
Gradeability	: 35° (%70)
Parking Brake	: Hydraulic multi disc type, integrated transmission
Ground pressure (600mm Shoe)	: 0,77 kgf/cm <sup>2</sup>
Ground pressure (700mm Shoe)	: 0,66 kgf/cm <sup>2</sup>
Ground pressure (800mm Shoe)	: 0,59 kgf/cm <sup>2</sup>
Ground pressure (900mm Shoe)	: 0,53 kgf/cm <sup>2</sup>

**HYDRAULIC SYSTEM**

<b>Main Pump</b>	
Type	: Double variable displacement axial piston pumps
Max. Flow	: 2 x 290 L/m
Pilot Pump	: Gear, 28 L/m
<b>Relief Valves</b>	
Attachment	
Boom Lifting down	: 240 kgf/cm <sup>2</sup>
Boom Lifting up	: 330 kgf/cm <sup>2</sup>
Travel	: 280 kgf/cm <sup>2</sup>
Swing	: 350 kgf/cm <sup>2</sup>
Pilot	: 40 kgf/cm <sup>2</sup>
<b>Cylinders</b>	
Main Boom	: 2 x ø 150 x ø 105 x 1.510 mm
Stick Cylinder	: 1 x ø 170 x ø 120 x 1.830 mm
Bucket Cylinder	: 1 x ø 125 x ø 85 x 1.060 mm

**Opera Control System**

• Easy-to-use control panel and menus	• Overheat prevention and protection system without interrupting the work
• Improved fuel economy and productivity	• Automatic idling Selection of multi-language on control panel
• Automatical electric power-off	• Rear-view, arm-view camera (Optional)
• Maximum efficiency by selection of power and work modes	• Possibility to register 26 different operating hours
• Error mode registry and warning system	• Anti-theft system with personal code
• Hidromek Smartlink	• Real time monitoring of operational parameters such as pressure, temperature, engine load
• Automatic preheating	
• Automatical powerboost (Optional)	

**SWING SYSTEM**

Swing Motor	: Axial piston type integrated with shock absorber valves
Reduction	: 2 stage planetary gear box.
Swing Brakes	: Hydraulic multi disc type, automatic warnings
Swing Speed	: 8,7 rpm

**CAPACITY**

Fuel Tank	: 555 lt	Engine Oil	: 36 lt
Hydraulic Tank	: 260 lt	Swing Reduction	: 7,2 lt
Hydraulic System	: 480 lt	Travel Reduction	: 2x10 lt
Radiator	: 39 lt		

**ELECTRICAL SYSTEM**

Voltage	: 24 V
Battery	: 2 x 12 V x 150 Ah
Alternator	: 24 V / 50 A
Starting Motor	: 24 V / 5,0 kw

**LUBRICATION**

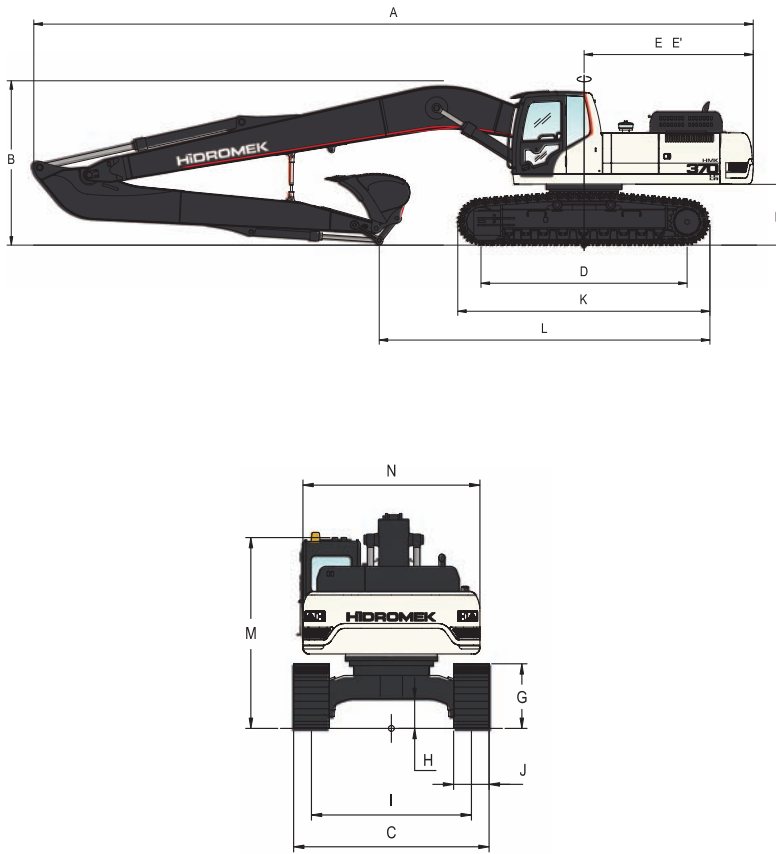
A central lubrication system is available in order to lubricate difficult-to-reach points such as boom and arm.

**OPERATING WEIGHT**

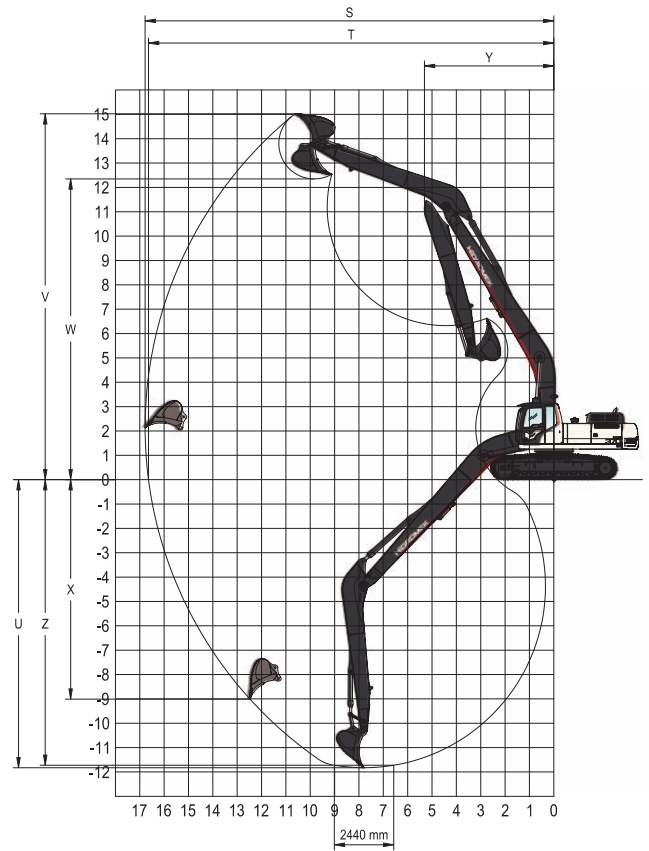
Standard machine operating weight (800mm Shoe) : 42.050 kg

# HMK 370 LC LR

I.



II.



## I. GENERAL DIMENSIONS

Boom Dimension	10.000 mm
Arm Dimension	6.000 mm
A - Overall Length	14.830 mm
B - Overall Height	3.350 mm
C - Overall Width (LC)	3.300 / 3.400 / * 3.500 / 3.600 mm
D - Idler Distance	4.240 mm
E - Counterweight Distance	3.520 mm
E' - Turning Radius	3.570 mm
F - Upper Structure Ground Clearance	1.250 mm
G - Crawler Height	1.090 mm
H - Minimum Ground Clearance	500 mm
I - Track Gauge	2.700 mm
J - Shoe Width	600 / 700 / * 800 / 900 mm
K - Overall Length of Crawler	5.190 mm
L - Length Over Ground	6.850 mm
M - Overall Height (to Top of Cab)	3.160 mm
N - Upper Structure Width	2.990 mm

\* Standard

## II. WORKING DIMENSIONS

Boom Dimension	10.000 mm
Arm Dimension	6.000 mm
S - Maximum Digging Reach	16.780 mm
T - Maximum Digging Reach at Ground Level	16.640 mm
U - Maximum Digging Depth	11.820 mm
V - Maximum Digging Height	15.030 mm
W - Maximum Dumping Clearance	12.350 mm
X - Maximum Vertical Digging Depth	10.070 mm
Y - Minimum Swing Radius	4.420 mm
Z - Maximum Digging Depth (2440 mm level)	11.720 mm

## III. DIGGING PERFORMANCE

Standard Bucket Capacity	1,0 m <sup>3</sup> (SAE)
Bucket Digging Force (ISO)	11.400 kgf
Arm Crowd Force (ISO)	7.800 kgf

## HİDROMEK®

### FACTORY - HEAD OFFICE

Ayas yolu 25. km 1. Organize Sanayi Bölgesi Osmanlı Caddesi No: 1  
06935 Sincan / ANKARA / TURKEY  
Tel: (+90) 312 267 12 60 Fax: (+90) 312 267 12 39  
www.hidromek.com

### Notice:

Hidromek has the right to modify the specifications and design of the model indicated on this brochure without prior notice.