



ENGINE

Model	: ISUZU-AH-6HK1X
Type	: Water-cooled, 4 cycle, 6 cylinders, line type direct injection, turbocharger, intercooler, diesel engine
Power	: 202HP / 1800 rpm SAE J1349 (Net) : 216HP / 1800 rpm SAE J1995 (Gross)
Max. Torque	: 903 Nm / 1500 rpm (Net) : 940 Nm / 1500 rpm (Gross)
Displacement	: 7790 cc
Bore and Stroke	: 115 mm x 125 mm
Emission Class	: FAZ III-A (Tier III) * (UNECE R96)
This new engine complies with the Emission Regulations U.S. EPA Tier III, and and EU Stage III-A	

UNDERCARRIAGE

X Type Lower Frame Construction Pentagon Box Type Chassis	
Shoe	: Triple grouser
No. Of Shoes	: 2 x 51
No. Of Lower Rollers	: 2 x 9
No. Of Upper Rollers	: 2 x 2
Track Tensioning	: Hydraulic Spring Tensioning

CAB

- Wide cab and easy entrance
- Use of six viscomount cabin mountings that dampen the vibrations
- Cooled storage room
- Colourful, Easy to read TFT indicant monitor
- Glass holder, book and object storage pockets
- Full automatic digitally air-conditioner
- Overclass standarts on the visibility
- Pool type floor mat
- Improved operator's comfort through versatile adjustable seat
- Ergonomically redesigned cabin through relocated switch board, and re-styled travel pedals and levers
- USB connected MP3 player
- Easy to open the front sliding glass
- Front and rear sun visor
- Large storage areas
- Height adjustable joystick
- Improved seat to back angle
- The height adjustable seat armrests
- Opera Control System

TRAVEL AND BRAKERS

Travel	: Fully hydrostatic
Travel Motors	: Axial piston type
Reduction	: 2 stage planetary gear
Travel Speed	
High Speed	: 5,1 km/h
Low Speed	: 2,9 km/h
Max. Drawbar Pull	: 26.070 kgf
Gradeability	: 35° (%70)
Parking Brake	: Hydraulic multi disc type, integrated transmission

LUBRICATION

Centralized lubrication system is provided for lubrication all difficult-to-reach parts on the components, such as boom and arm

HYDRAULIC SYSTEM

Main Pump	
Type	: Double variable displacement axial piston pumps
Max. Flow	: 2 x 259 lt/dk
Pilot Pump	: Gear, 27 lt/dk
Relief Valves	
Attachment	
Boom Lifting down	: 150 kgf/cm ²
Bucket opening	: 240 kgf/cm ²
Boom Lifting up	: 330 kgf/cm ²
Bucket closure	: 240 kgf/cm ²
Travel	: 350 kgf/cm ²
Arm opening	: 330 kgf/cm ²
Swing	: 285 kgf/cm ²
Arm closure	: 240 kgf/cm ²
Pilot	: 40 kgf/cm ²
Cylinders	
Main Boom	: 2 x ø 140 x ø 100 x 1.445 mm
Stick Cylinder	: 1 x ø 160 x ø 110 x 1.760 mm
Bucket Cylinder	: 1 x ø 110 x ø 70 x 910 mm

Opera Control System

• Easy-to-use control panel and menus	• Overheat prevention and protection system without interrupting the work
• Improved fuel economy and productivity	• Automatic idling Selection of multi-language on control panel
• Automatical electric power-off	• Rear-view, arm-view camera (Optional)
• Maximum efficiency by selection of power and work modes	• Possibility to register 26 different operating hours
• Error mode registry and warning system	• Anti-theft system with personal code
• Hidromek Smartlink	• Real time monitoring of operational parameters such as pressure, temperature, engine load
• Automatic preheating	
• Automatical powerboost (Optional)	

SWING SYSTEM

Swing Motor	: Axial piston type integrated with shock absorber valves
Reduction	: 2 stage planetary gear box.
Swing Brakes	: Hydraulic multi disc type, automatic warnings
Swing Speed	: 10,2 rpm

CAPACITY

Fuel Tank	: 480 lt	Engine Oil	: 36 lt
Hydraulic Tank	: 209 lt	Swing Reduction	: 7 lt
Hydraulic System	: 400 lt	Travel Reduction	: 2x9,5 lt
Radiator	: 36 lt		

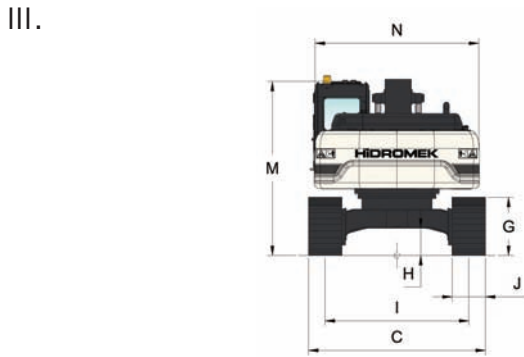
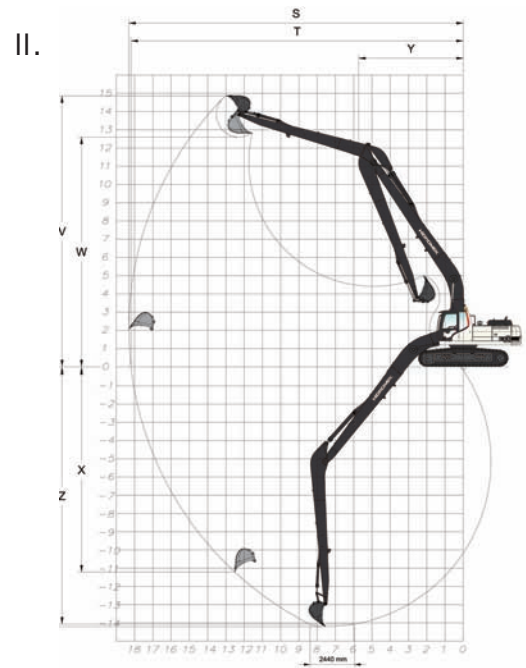
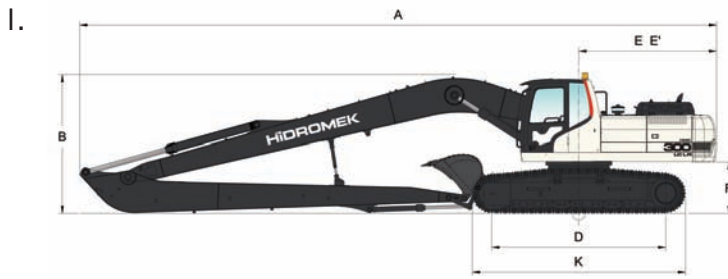
ELECTRICAL SYSTEM

Voltage	: 24 V
Battery	: 2 x 12 V x 150 Ah
Alternator	: 24 V / 50 A
Starting Motor	: 24 V / 5,0 kw

OPERATING WEIGHT

Standard machine operating weight	
Shoe width	Weight
600 mm	34.145 kg
700 mm	34.525 kg
800 mm	34.930 kg

HMK 300 LC LR



I. GENERAL DIMENSIONS

Boom Dimension	10.300 mm
Arm Dimension	7.800 mm
A - Overall Length	14.750 mm
B - Overall Height (to top of boom)	3.200 mm
C - Overall Width	3.200 / 3.300 / * 3.400 mm
D - Idle Distance	4.030 mm
E - Counterweight Distance	3.190 mm
E' - Turning Radius	3.240 mm
F - Upper Structure Ground Clearance	1.205 mm
G - Crawler Height	1.065 mm
H - Minimum Ground Clearance	500 mm
I - Track Gauge	2.600 mm
J - Shoe Width	600 / 700 / * 800 mm
K - Overall Length of Crawler	4.940 mm
M - Overall Height (to Top of Cab)	3.160 mm
N - Upper Structure Width	2.990 mm

* Standard

II. WORKING DIMENSIONS

Boom Dimension	10.300 mm
Arm Dimension	7.800 mm
S - Maximum Digging Reach	18.360 mm
T - Maximum Digging Reach at Ground Level	18.240 mm
U - Maximum Digging Depth	14.200 mm
V - Maximum Digging Height	14.980 mm
W - Maximum Dumping Clearance	12.700 mm
X - Maximum Vertical Digging Depth	11.350 mm
Y - Minimum Swing Radius	5.930 mm
Z - Maximum Digging Depth (2440 mm level)	14.100 mm

III. DIGGING PERFORMANCE

Standard Bucket Capacity	0,60 m ³ (SAE)
Bucket Digging Force (ISO)	7.300 kgf
Arm Crowd Force (ISO)	5.400 kgf

STANDARD BUCKET DITCH CLEANING BUCKETS

HEAVY DUTY TYPE	STANDARD BUCKET			DITCH CLEANING BUCKETS		
	Width	Capacity	Weight	Width	Capacity	Weight
	985 mm	0,60 m ³	490 kg	2.000 mm	0,60 m ³	650 kg
	4	-	-	2.000 mm	0,60 m ³	495 kg
	ARM 7,8 m	A	A	A	A	A

* Tilt angle 2 x 35°

HIDROMEK®

FACTORY - HEAD OFFICE

Ayas yolu 25. km 1. Organize Sanayi Bölgesi Osmanlı Caddesi No: 1
06935 Sincan / ANKARA / TURKEY
Tel: (+90) 312 267 12 60 Fax: (+90) 312 267 12 39
www.hidromek.com

Notice:

Hidromek has the right to modify the specifications and design of the model indicated on this brochure without prior notice.