

AR500

Operation weight:
6,220 kg

Power:
55 kW (74 HP)

Shovel capacity:
1.1 - 1.3 m³



AR500

POWERFUL. SUSTAINABLE. RELIABLE.

weycor wheel loaders are more than just the sum of all their 1,500 parts – they are the pure embodiment of passion at the highest level of quality. Just as you might expect from a German mid-sized company.

Thanks to our team's innovative spirit, our love for the environment and the joy of powerful engine technology, we are consistently developing our wheel loaders. The result: a new wheel loader generation that'll win you over in every detail.

The new AR 500 stands for:

Sustainability – complies with the required NOx and PM limits and in line with the most stringent international emission regulations

Efficiency – strong performance with a lower fuel consumption

Innovation – optimized and sophisticated solutions right down to the very last detail

Quality "Made in Germany"



DETAILS THAT MAKE AN IMPRESSION



• LATEST KINEMATICS TECHNOLOGY

The proven and tested weycor kinematics with its exceptional tear-out force and excellent lifting heights. The tapered loading rocker makes sure you can always keep an eye on the attachment



• EASY MAINTENANCE

Low-maintenance and quick, easy servicing is achieved by central, consolidated, easy-to-reach service points.



• HYDRAULIC QUICK-CHANGE ATTACHMENT

By allowing you to change the wheel loader's attachments in a few seconds, it turns the vehicle into an all-rounder.



• ARTICULATED PENDULUM JOINT

Provides for excellent maneuverability and cross-country mobility. Even on challenging terrain, the low center of gravity ensures exceptional stability.



• SEPARATE INCHING PEDAL

Less wear & tear and fuel consumption: In contrast to the conventional combined brake/inching pedal, with the separate inching pedal, the risk of inadvertently activating the main brake while you drive is eliminated.



• NEGATIVE BRAKE

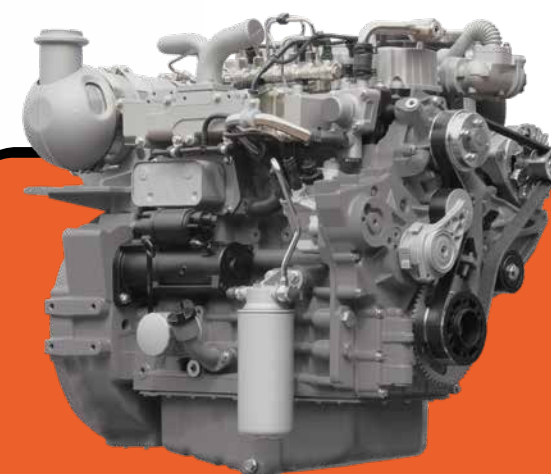
Serves to maintain a stable position while the wheel loader is driven on slopes with the brake or inching function activated. All four wheels are automatically blocked as soon as the engine is stopped.

• COMFORTABLE CABIN

In addition to the excellent circumferential visibility in the wheel loader, its clearly arranged controls and its ergonomic design. Cab with tilt function.

• POWERFUL DRIVE UNIT

weycor wheel loaders are equipped with state-of-the-art engines which combine high power reserves for challenging operations with up-to-date low emission values.



DEUTZ ENGINE TECHNOLOGY

TCD 3.6 L4 High Torque

Newly-designed, water cooled 4-cylinder inline engine with cooled, external exhaust gas recirculation with and without turbocharging and optionally with and without charge air cooling. Use of DVERT® oxidation catalyst (DOC) enables maintenance-free operation under all application and ambient conditions. The powerful Common Rail injection system and highly-efficient combustion process with cooled external exhaust gas recirculation ensure optimum engine performance at low fuel consumption and exhaust emissions. Best cold starting performance even under extreme conditions. The engines meet the requirements of the EU Stage IIIB and US EPA TIER 4 interim with DVERT® oxidation catalyst. In the version of TIER 4 final additionally equipped with SCR. TIER 5 ready with optional DPF/DOC/SCR.

* Travel with load only permitted close to the ground.
 ** According to ISO 8313 and EN 474-3. *** According to ISO 14396,
 EU RL97/68/EC. (1) According to 2000/14/EG & appendixes.
 (2) According to 2000/14/EG & appendixes. (3) According to ISO 6396
 (4) According to ISO 8041.



You can find our current product range and more exciting details at: **www.products.weycor.de**

Under our policy of continuous improvement, we reserve the right to change specifications and design without prior notice, errors expected. The technical data refer only to the standard version, illustrations do not necessarily show the standard version of the machine. Not all products are available in all markets.

weycor is a brand of ATLAS WEYHAUSEN GMBH.

ATLAS WEYHAUSEN GMBH · D - 27793 Wildeshausen
Phone +49 (0) 44 31 - 98 10 · info@weycor.de · www.weycor.de

 **weycor**
BY ATLAS WEYHAUSEN